

# Societas Linguistica Europaea

NEWSLETTER – JULY 2025



## SLE 2025 conference

[Bordeaux is ready to host us! pp. 1-3](#)

Book of abstracts available.

Titles of plenary talks revealed.

**Outreach Session, in hybrid mode.**

The EC awarded 4 fee waivers.

**Budget cuts in Departments of Languages and Linguistics: action needed?** Follow-up on p. 4

## SLE online Autumn lecture

27 November 2025, 5pm CET, See p. 5

## SLE 2025 Bordeaux

26 – 29 August

## 58th Annual SLE Meeting

<https://societaslinguistica.eu/sle2025/>

The schedule and book of abstracts are available online: [Schedule - SLE 2025](#), and the conference app will be up and running again in Bordeaux. All schedule changes will be announced on the app, as well as on the info board at the reception.

There will be two poster sessions on day 2 and 3 before noon, with 30 posters in total.

The following publishers will join us with a book exhibit: Cambridge University Press, Benjamins, DeGruyter Brill, Edinburgh University Press, Language Science Press, and Routledge.



### Plenary speakers at the 58<sup>th</sup> Annual SLE Meeting:

- Livio Gaeta (Università di Torino) Presidential address: “Handle with care: the dangerous relations between language contact and linguistic theory”
- Dagmar Divjak and Petar Milin (University of Birmingham): “Top-down wisdom versus bottom-up noise: can data (ever) replace linguistic expertise?”
- Carmelo Alessandro Basile (Université Sorbonne Nouvelle), winner of the Best Postdoc paper at SLE 2024: “Charting modal change in Singapore English: evidence from contemporary corpus and survey data”
- Sandra Cronhamn and Anna Hjortdal (Lund University), winners of the Best PhD paper at SLE 2024: “The predictive function of nominal classification systems: Trade-offs between speaker and listener needs in a typological perspective”

All plenaries will be streamed and recorded.

### ROUND TABLE: “How to do linguistics with AI; how to do AI with linguistics”

A short description of the round table is now available [here](#). We encourage all SLE members to submit their questions, comments, points for discussion prior to the meeting by emailing the conference manager ([sle.cm@kuleuven.be](mailto:sle.cm@kuleuven.be)).

### Outreach Session – Thursday 28 August, 9:00–13:25 CET | in person and online

Organisers: Alexandru Nicolae & Marc Olivier

How can we better communicate linguistics beyond academia? This special **Outreach Session**, which will be held in person and live streamed, brings together researchers engaged in science communication and public engagement to share insights, experiences, and research-based practices for making linguistics accessible and relevant to wider society.

Join us in person or online as we explore national and local initiatives that aim to broaden the reach of linguistic knowledge – from education and political discourse to long-term public engagement projects. This is an opportunity to reflect on how linguistics can contribute to solving societal challenges and how we can do better in telling our discipline’s story.

Link: <https://meet.google.com/yjv-azgy-tai>

**Speakers and Talks:**

- Mara Frascarelli & Viviana Masia: “How skilled are you with the tricks of political communication? Cues, challenges and didactic developments”
- Michelle Sheehan, Anna Havinga, Jonathan Kasstan, Norma Schifano & Sascha Stollhans: “Why language teaching needs linguistics: evidence from the UK”
- Francesca Masini, Nicola Grandi, Nicole Marinaro & Alex Piovan: “Linguistics Unplugged: A Five-Year Journey in Public Engagement”

The Executive Committee has awarded four **waivers** for the conference fees & conference dinner. The awardees are Patrice Kanndèl Édouard, Irene Pagliai, Elena Shvedova, and Hilary McMahan.

## Next venues:

### SLE 2026:

#### **Osnabrück University**

(26 – 29 August 2026; Chair: Alexander Bergs)

### SLE 2027:

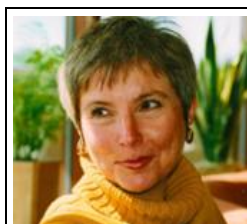
#### **We received a bid from Pavol Jozef Šafárik University, Košice (Slovakia)**

(Chair: Livia Körtvélyessy)

[Follow SLE on Facebook](#)

[Join SLE on LinkedIn](#)

## Siewierska and Coseriu awards will be awarded in Bordeaux



**Anna Siewierska Award 2025** (annual) for the best *FL* or *FoLH* paper.

This award does not require an application. All articles published in *FL* and *FoLH* in 2024 are eligible.

Award Committee: Livio Gaeta (chair), Viviana Masia, Maria Napoli, Gunther Kaltenböck, Nikolaus Ritt



(Source:  
<https://coseriu.ch/>)

**Eugenio Coseriu Award 2025** (biannual) for an outstanding research monograph by a junior scholar.

Books must be first published in 2021, 2022, 2023, or 2024.

Award Committee: Silvia Luraghi (chair), Karen Lahousse, Ianthi Tsimpli, Guglielmo Inglese, Seppo Kittilä

[rectified information compared to previous 2025 newsletters]

## Budget cuts in language programmes – Follow-up

In the April newsletter, the Executive Committee asked the SLE membership to share information about budget cuts of language and linguistics studies in their respective home institutions. As we did not receive any reaction, the EC decided that they cannot take any further action, apart from giving the floor to Leena Kolehmainen (University of Helsinki), Philipp Krämer (Vrije Universiteit Brussel) and Ulrike Vogl (Ghent University) for a presentation on the results of their research project “Closing and Opening Doors”. We are delighted they accepted our invitation to present the Autumn lecture (see below).

## Online Autumn lecture

This year's Autumn lecture will take place on Thursday **27 November at 5 pm CET**. As mentioned above, it will be a joint lecture by Leena Kolehmainen (University of Helsinki), Philipp Krämer (Vrije Universiteit Brussel) and Ulrike Vogl (Ghent University), and it is entitled "Closing and opening doors: Universities restructuring their language training programs".

In their research project, they collected data on recent or planned closures of university language training or research programmes, or severe downsizing and cuts of their resources, at European universities, including institutions in non-EU countries. In addition, they also investigated the opposite process, such as new job openings, the start of new language training programmes and allocation of additional resources for language training and research. Their focus is on academic degree programmes (BA, MA, minors, majors, PhD) in languages or linguistics, literatures and cultural studies, translation or interpreting studies, and language teaching offered in university language centres.

We will provide you with an abstract and a link to the online lecture in the next newsletter.

### Call for proposals

The organization of online lectures is a community-driven activity of the SLE. Members take the initiative to promote research (lines) close to them. Specifically, a group of five SLE members can propose a speaker and topic to the Executive Committee via [this form](#). Proposals can be submitted at any time of the year. We aim to have at least one online lecture per season apart from the summer, when we have our annual meeting. We are currently looking for speakers for the Winter and Spring lectures of the upcoming academic year.

## News from CIPL

SLE is a member of CIPL, *Comité International Permanent des Linguistes*. Its Executive Committee decided to select Leiden as the venue for the 2028 International Congress of Linguists. The proposed title is: World of Languages. ICL2028 will take place from 23-29 July 2028, and will be the occasion to celebrate CIPL's centenary anniversary.

<b>Editor of this issue:</b> An Van linden	<b>Contact:</b> <a href="mailto:an.vanlinden@uliege.be">an.vanlinden@uliege.be</a>
---	---